

# iC-MU EVAL MU2M

## 3-TRACK NONIUS EVALUATION KIT DESCRIPTION

preliminary



Rev A1, Page 1/7

### ORDERING INFORMATION

Type	Order Designation	Description Options
Evaluation Kit	iC-MU EVAL MU2M	Evaluation kit includes board MU2M populated with two iC-MU DFN16-5x5 and an two EEPROMs (see Figure 6)
Evaluation Board	iC-MU EVAL MU1D	Evaluation board suitable to eval kit MU1M and MU2M, the board is needed to connect MU2M to a PC via MB4U adapter
Magnetic Tapes	MU4L 655-256N MU5L 2620-1024N	Magnetic tape 3-track nonius, total length 700mm Magnetic tape 3-track nonius, total length 2650mm
PC Adapter	iC-MB4 iCSY MB4U	High Performance BiSS-to-PC Adapter (USB) adapter is necessary for calibration of iC-MU

### BOARD MU2M

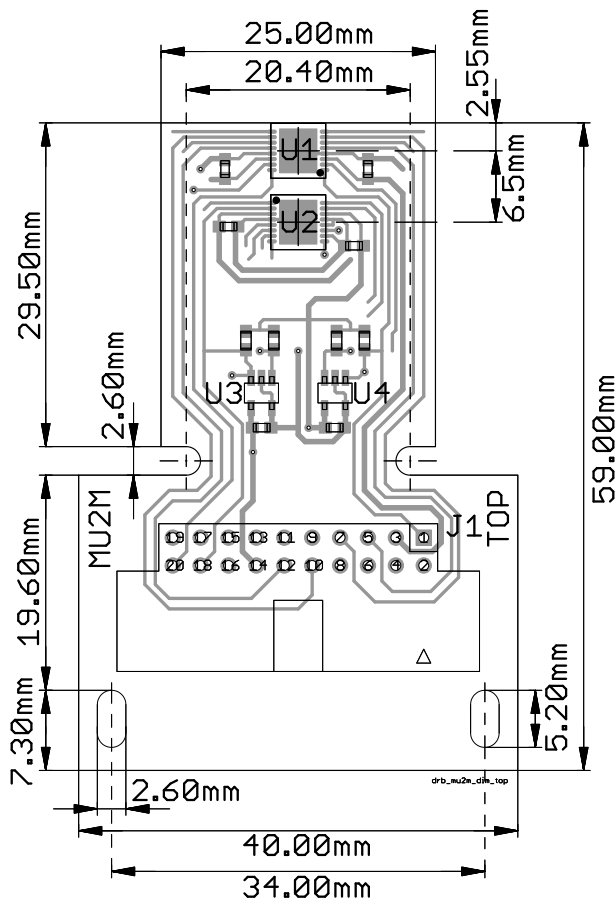


Figure 1: Component side

### TERMINAL DESCRIPTION

J1	Signal output connector (pin configuration suitable to connector J1 of board MU1D)
----	---

# iC-MU EVAL MU2M

## 3-TRACK NONIUS EVALUATION KIT DESCRIPTION

preliminary



Rev A1, Page 2/7

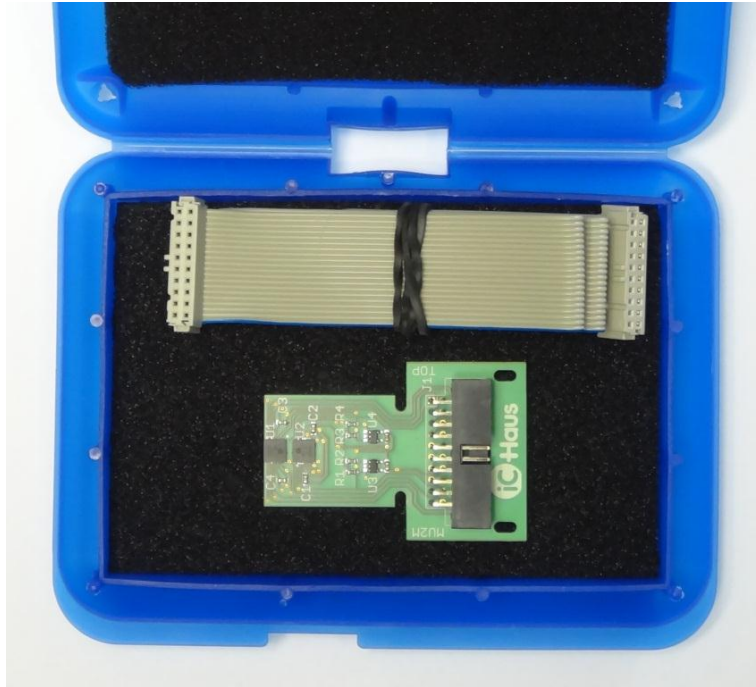


Figure 2: Evaluation kit iC-MU EVAL MU2M

### CONNECTOR AND TERMINAL PINOUT

#### J1: Signal output

PIN	Name	Function
1	SCL_U1	EEPROM interface U1, clock
2	SDA_U1	EEPROM interface U1, data
3	VPA	Analog supply voltage
4	GND	Ground
5	PB0_U1	Port B MU1, Pin 0: Digital I/O, analog output configurable
6	PB1_U1	Port B MU1, Pin 1: Digital I/O, analog output configurable
7	PB2_U1	Port B MU1, Pin 2: Digital I/O, analog output configurable
8	PB3_U1	Port B MU1, Pin 3: Digital I/O, analog output configurable
9	PA3_U1	Port A MU1, Pin 3: Digital I/O, configurable
10	PA2_U1	Port A MU1, Pin 2: Digital I/O, configurable
11	PA1_U1	Port A MU1, Pin 1: Digital I/O, configurable
12	PA0_U1	Port A MU1, Pin 0: Digital I/O, configurable
13	GND	Ground
14	VPD	Digital supply voltage
15	MTD_U2	Multiturn interface MU2, data
16	MTC_U2	Multiturn interface MU2, clock
17	SCL_U2	EEPROM interface MU2, clock
18	SDA_U2	EEPROM interface MU2, data
19	MTD_U1	Multiturn interface MU1, data
20	MTC_U1	Multiturn interface MU1, clock

### CIRCUIT DESCRIPTION

The iC-MU evaluation board MU2M features a 20-pin connector. A ribbon cable could be connected to the evaluation board MU1D (see Figure 6). A 3-track nonius system linear or rotary (radial magnetize) can be evaluate using the board MU2M.

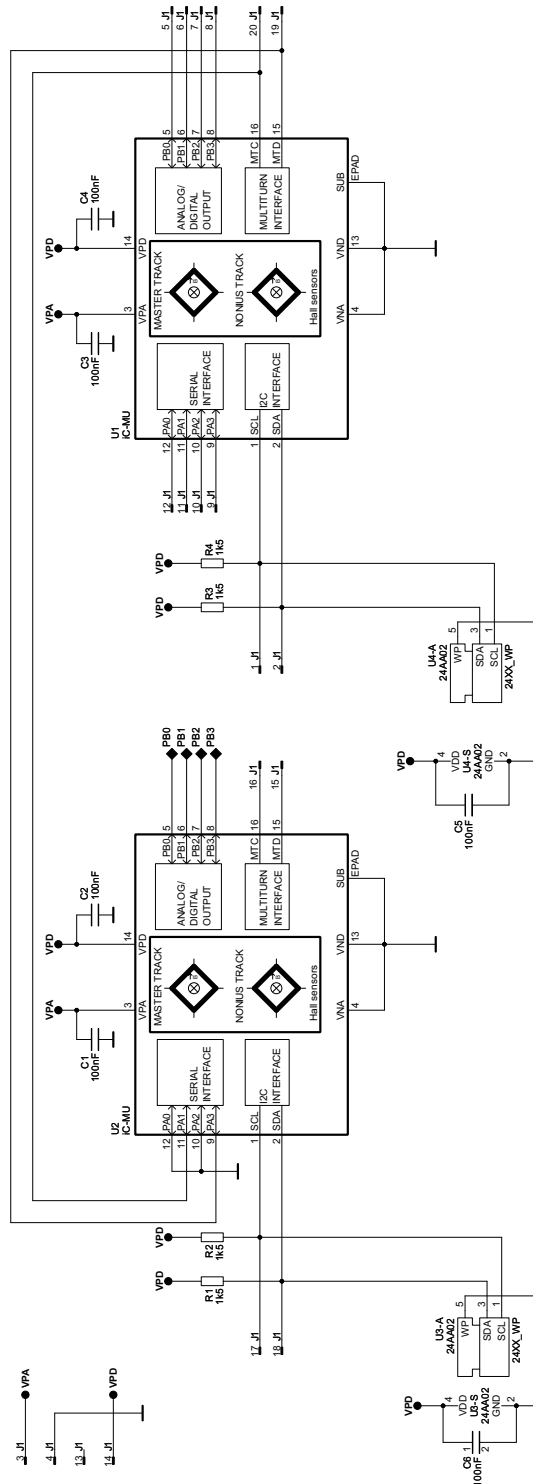


Figure 3: Circuit diagram MU2M

### ASSEMBLY PART LISTS

Device	Value (typical)	Comment
C1 - C6	100 nF (0603)	Capacitors X7R 16V
R1 - R4	1.5 k $\Omega$ (0603)	I <sup>2</sup> C pull-up resistors 1%
U1	iC-MU DFN16-5x5	iC-MU Device 1 (ST, segment/master track)
U2	iC-MU DFN16-5x5	iC-MU Device 2 (MT, nonius/master track)
U3	24AA02 (SOT23)	EEPROM 2k connected to U2
U4	24AA02 (SOT23)	EEPROM 2k connected to U1
J1	20 pol.	Connector WSL 2x10 90 deg

Table 1: Board MU1M

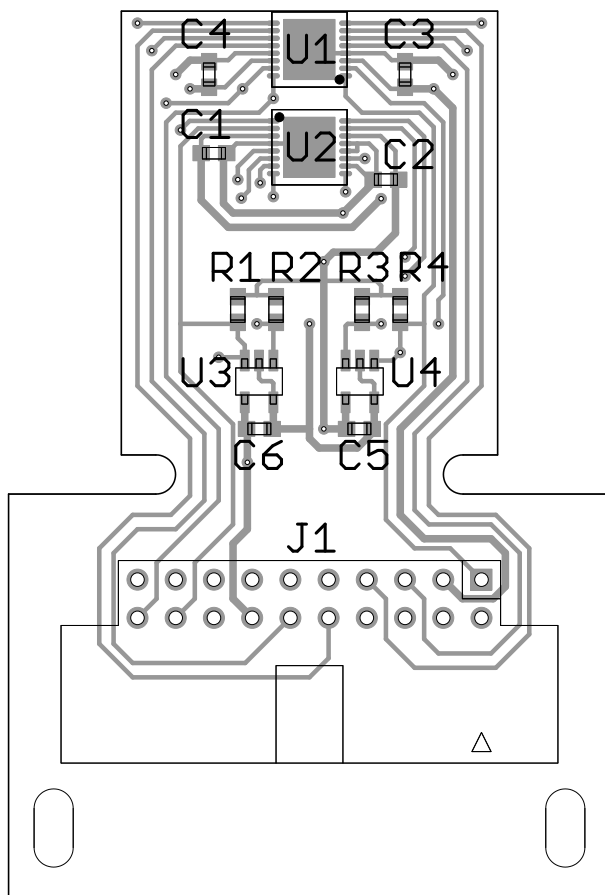


Figure 4: Board MU2M - top side

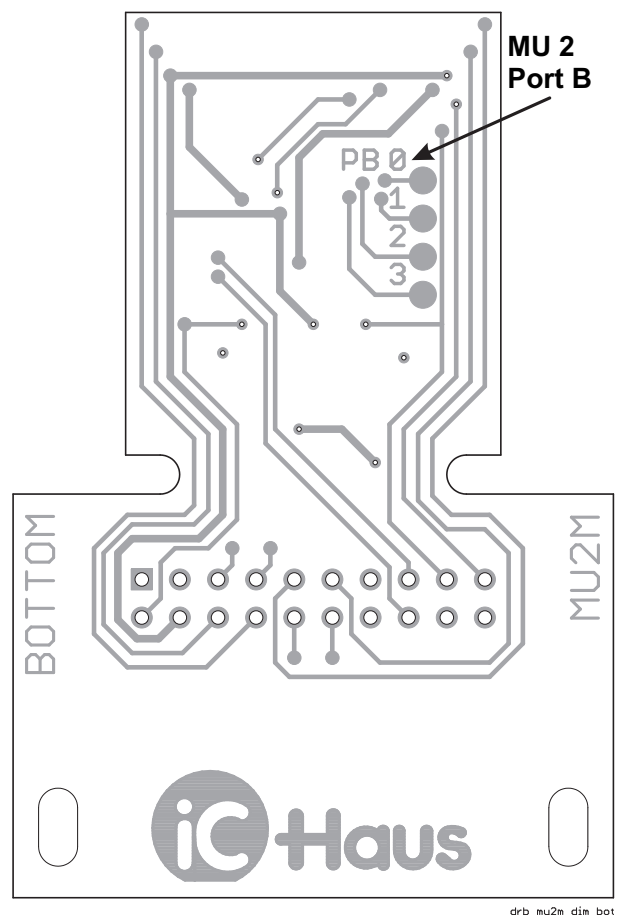


Figure 5: Board MU2M - bottom side

# iC-MU EVAL MU2M

## 3-TRACK NONIUS EVALUATION KIT DESCRIPTION

preliminary



Rev A1, Page 6/7

### APPLICATION EXAMPLE

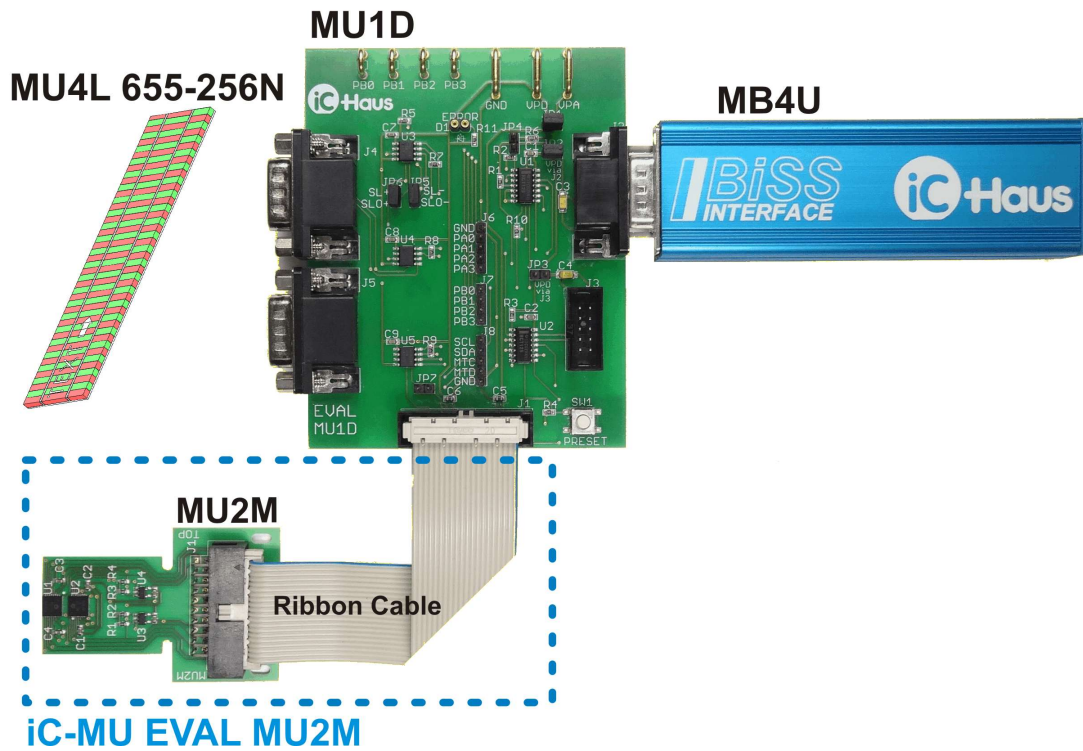


Figure 6: iC-MU eval kit parts

Required eval kit parts:

1. iC-MU EVAL MU2M
2. iC-MU EVAL MU1D
3. MU4L 655-256N
4. iC-MB4 iCSY MB4U

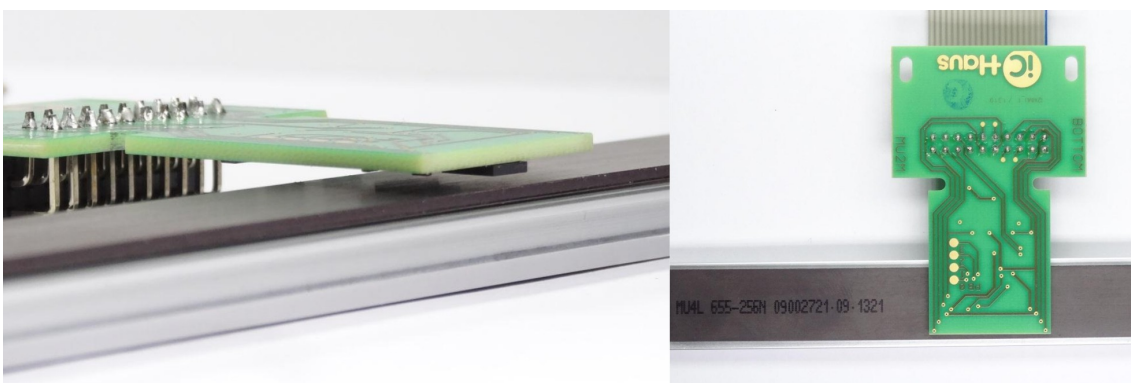


Figure 7: MU2M with magnetic tape MU4L 655-256N

# iC-MU EVAL MU2M

## 3-TRACK NONIUS EVALUATION KIT DESCRIPTION

preliminary



Rev A1, Page 7/7

### RELATED PRODUCTS AND DOCUMENTATION

Item	Description	Documentation and Information
iC-MU DFN16-5x5	Magnetic off-axis absolute position encoder	<a href="http://www.ichaus.de/iC-MU">http://www.ichaus.de/iC-MU</a>
MU4L 655-256N	Magnetic tape, 3-track nonius	
MU5L 2620-1024N	Magnetic tape, 3-track nonius	
iC-MU EVAL MU1D	Evaluation board suitable for MU1M	
iC-MB4 iCSY MB4U	High Performance BiSS-to-PC Adapter (USB)	<a href="http://www.ichaus.de/MB4U">http://www.ichaus.de/MB4U</a>

### REVISION HISTORY

Rev	Notes	Pages affected
A1	Initial version	

iC-Haus expressly reserves the right to change its products and/or specifications. An info letter gives details as to any amendments and additions made to the relevant current specifications on our internet website [www.ichaus.de/infoletter](http://www.ichaus.de/infoletter); this letter is generated automatically and shall be sent to registered users by email.

Copying – even as an excerpt – is only permitted with iC-Haus' approval in writing and precise reference to source.

iC-Haus does not warrant the accuracy, completeness or timeliness of the specification and does not assume liability for any errors or omissions in these materials.

The data specified is intended solely for the purpose of product description. No representations or warranties, either express or implied, of merchantability, fitness for a particular purpose or of any other nature are made hereunder with respect to information/specification or the products to which information refers and no guarantee with respect to compliance to the intended use is given. In particular, this also applies to the stated possible applications or areas of applications of the product.

iC-Haus conveys no patent, copyright, mask work right or other trade mark right to this product. iC-Haus assumes no liability for any patent and/or other trade mark rights of a third party resulting from processing or handling of the product and/or any other use of the product.