

iC-LFH EVAL LFH1M

EVALUATION BOARD DESCRIPTION



Rev A1, Page 1/2

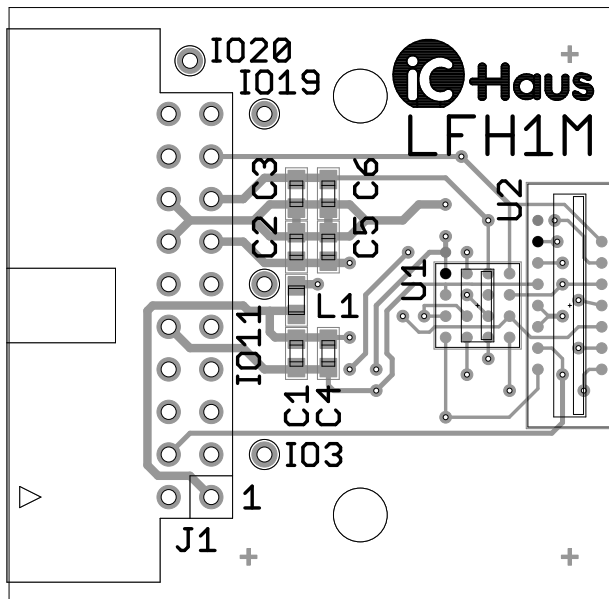
ORDERING INFORMATION

Type	Order Designation	Description Options
iC-LFH320	iC-LFH320 EVAL LFH1M	iC-LFH320 Evaluation Board
iC-LFH640	iC-LFH640 EVAL LFH1M	iC-LFH640 Evaluation Board
iC-LFH960	iC-LFH960 EVAL LFH1M	iC-LFH960 Evaluation Board
iC-LFH1024	iC-LFH1024 EVAL LFH1M	iC-LFH1024 Evaluation Board

BOARD LFH1M

(size 36,2 mm x 35.6 mm)

TERMINAL DESCRIPTION



J1 Connector

Figure 1: Component side

CONNECTOR AND TERMINAL PINOUT

20-pin Connector J1

PIN	Name	Function
1	GND	Digital ground
2	CLK	Clock
3	IO3	not used
4	SI	Start of integration
5	ESH	Enable shutter
6	RES0	Resolution selector bit 0
7	RES1	Resolution selector bit 1
8	BNA	Binning/averaging selector
9	NRES	Reset output
10	VDD	5 V digital supply
11	IO11	not used
12	GND_A	Analog ground
13	VDDA	5 V analog supply
14	GND_A	Analog ground
15	VAO	Analog output supply
16	GND_A	Analog ground
17	AO	Analog output
18	GND_A	Analog ground
19	IO19	not used
20	IO20	not used

iC-Haus expressly reserves the right to change its products and/or specifications. An info letter gives details as to any amendments and additions made to the relevant current specifications on our internet website www.ichaus.com/infoletter; this letter is generated automatically and shall be sent to registered users by email.

Copying – even as an excerpt – is only permitted with iC-Haus' approval in writing and precise reference to source.

iC-Haus does not warrant the accuracy, completeness or timeliness of the specification and does not assume liability for any errors or omissions in these materials.

The data specified is intended solely for the purpose of product description. No representations or warranties, either express or implied, of merchantability, fitness for a particular purpose or of any other nature are made hereunder with respect to information/specification or the products to which information refers and no guarantee with respect to compliance to the intended use is given. In particular, this also applies to the stated possible applications or areas of applications of the product.

iC-Haus products are not designed for and must not be used in connection with any applications where the failure of such products would reasonably be expected to result in significant personal injury or death (*Safety-Critical Applications*) without iC-Haus' specific written consent. Safety-Critical Applications include, without limitation, life support devices and systems. iC-Haus products are not designed nor intended for use in military or aerospace applications or environments or in automotive applications unless specifically designated for such use by iC-Haus.

iC-Haus conveys no patent, copyright, mask work right or other trade mark right to this product. iC-Haus assumes no liability for any patent and/or other trade mark rights of a third party resulting from processing or handling of the product and/or any other use of the product.