

iC-SM5L LGA SM2C

5MM MR-SENSOR PACKAGE SPECIFICATION

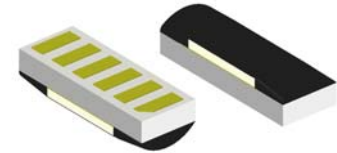
preliminary



Rev A2, Page 1/4

ORDERING INFORMATION

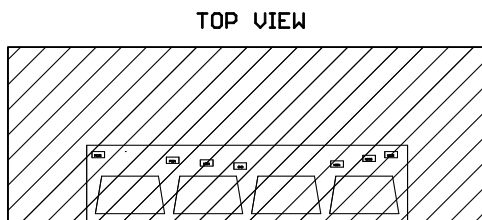
Type	Package	Options	Order Designation
iC-SM5L	LGA SM2C	none	iC-SM5L LGA SM2C



7.6 mm x 2.8 mm

PIN CONFIGURATION

PIN FUNCTIONS



1 2 3 4 5 6



No.	Name	Function
1	PCOS	Noninverted Cosine Output
2	NCOS	Inverted Cosine Output
3	VCC	Supply Voltage
4	GND	Ground
5	PSIN	Noninverted Sine Output
6	NSIN	Inverted Sine Output

DRB_SM2C_SF5L_PIN

ABSOLUTE MAXIMUM RATINGS

Item	Symbol	Parameter	Conditions	Fig.				Unit
					Min.	Typ.	Max.	
TG1	Ta	Operating Ambient Temperature Range (extended temperature range on request)			-20		90	°C
TG2	Ts	Storage Temperature Range			-30		110	°C
TG3	Tl	Lead Temperature	$t_{pk} < 20$ s, convection reflow $t_{pk} < 20$ s, vapour phase TOL (time on label) 8 h; please refer to customer information file No. 7 for details				260 230	°C °C

iC-SM5L LGA SM2C

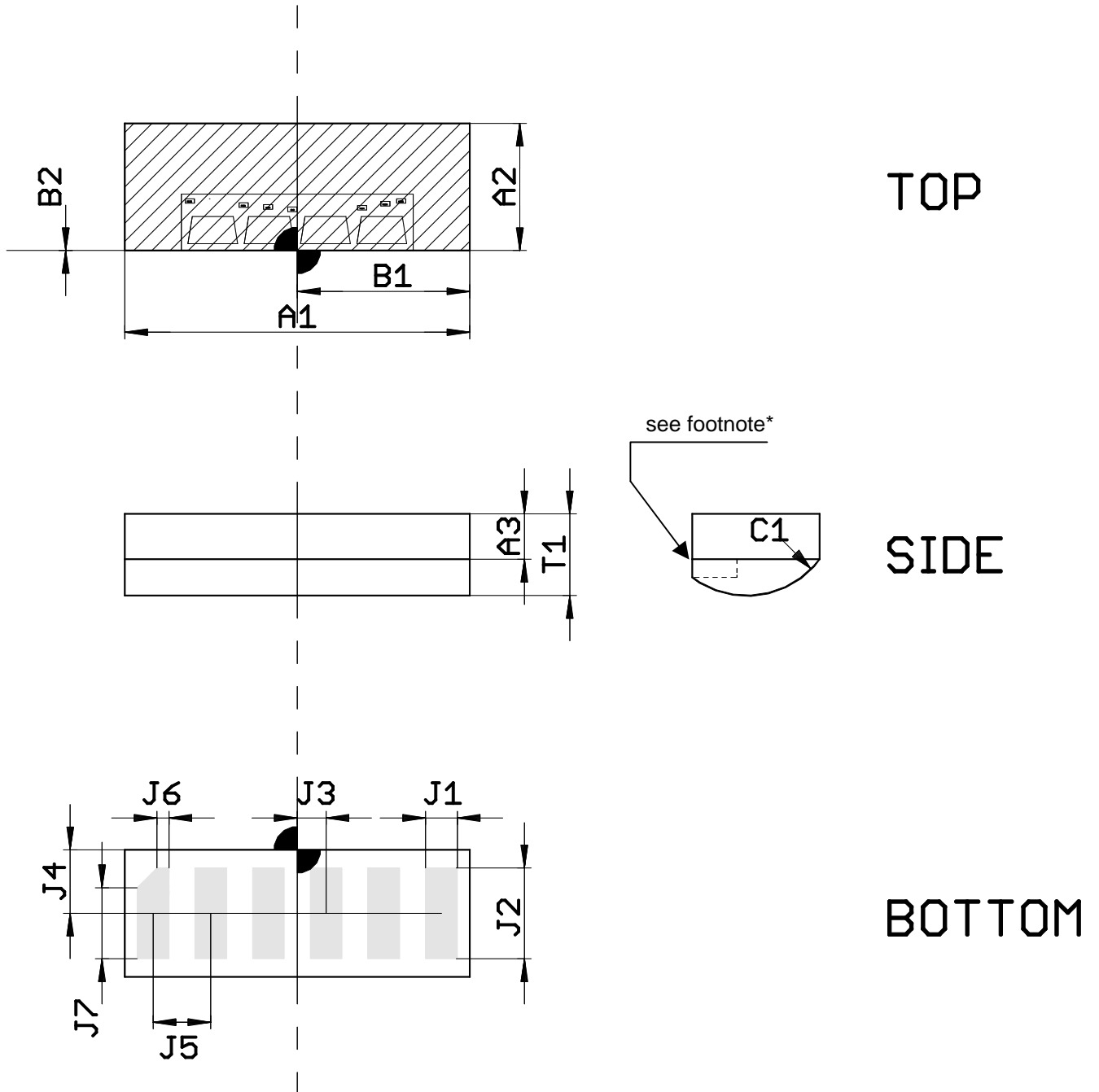
5MM MR-SENSOR PACKAGE SPECIFICATION

preliminary



Rev A2, Page 2/4

PHYSICAL DIMENSIONS



DRB_SM2C_SM5L_MEAS

* die edge exposed; avoid mechanical and electrical contact.

iC-SM5L LGA SM2C

5MM MR-SENSOR PACKAGE SPECIFICATION

preliminary



Rev A2, Page 4/4

REVISION HISTORY

Rev	Notes	Pages affected
1	Initial version	
2	Solder conditions, Footnote on page 2, Disclaimer	1,2,3

GENERAL HANDLING INSTRUCTIONS

After opening the dry pack, devices must be mounted within 8 hours (in factory conditions of maximum 30°C / 60% RH) or must be stored at <10% RH. Devices require baking before mounting if the Humidity Indicator Card shows >10% when read at 23°C ±5°C or if the conditions mentioned above are not met. Devices may be baked for 72 hours at 100°C using high-temperature device containers (trays).

Samples:

Samples may not be subject for dry pack delivery, and, in that case, are not intended for reflow soldering.

This specification is for a newly developed product. iC-Haus therefore reserves the right to change or update, without notice, any information contained herein, design and specification; and to discontinue or limit production or distribution of any product versions. Please contact iC-Haus to ascertain the current data. Copying – even as an excerpt – is only permitted with iC-Haus approval in writing and precise reference to source.

iC-Haus does not warrant the accuracy, completeness or timeliness of the specification on this site and does not assume liability for any errors or omissions in the materials. The data specified is intended solely for the purpose of product description. No representations or warranties, either express or implied, of merchantability, fitness for a particular purpose or of any other nature are made hereunder with respect to information/specification or the products to which information refers and no guarantee with respect to compliance to the intended use is given. In particular, this also applies to the stated possible applications or areas of applications of the product.

iC-Haus conveys no patent, copyright, mask work right or other trade mark right to this product. iC-Haus assumes no liability for any patent and/or other trade mark rights of a third party resulting from processing or handling of the product and/or any other use of the product.

As a general rule our developments, IPs, principle circuitry and range of Integrated Circuits are suitable and specifically designed for appropriate use in technical applications, such as in devices, systems and any kind of technical equipment, in so far as they do not infringe existing patent rights. In principle the range of use is limitless in a technical sense and refers to the products listed in the inventory of goods compiled for the 2007 export trade statistics issued by the Bureau of Statistics in Wiesbaden in December 2006, for example, or to any product in the product catalogue published for the 2007 exhibition in Hanover (Hannover-Messe).

We understand suitable application of our published designs to be state-of-the-art technology which can no longer be classed as inventive under the stipulations of patent law. Our explicit application notes are to be treated only as mere examples of the many possible and extremely advantageous uses our products can be put to.