

# iC149

## PROGRAMMABLE ns-PULSE GENERATOR

preliminary



Rev A2, Page 1/8

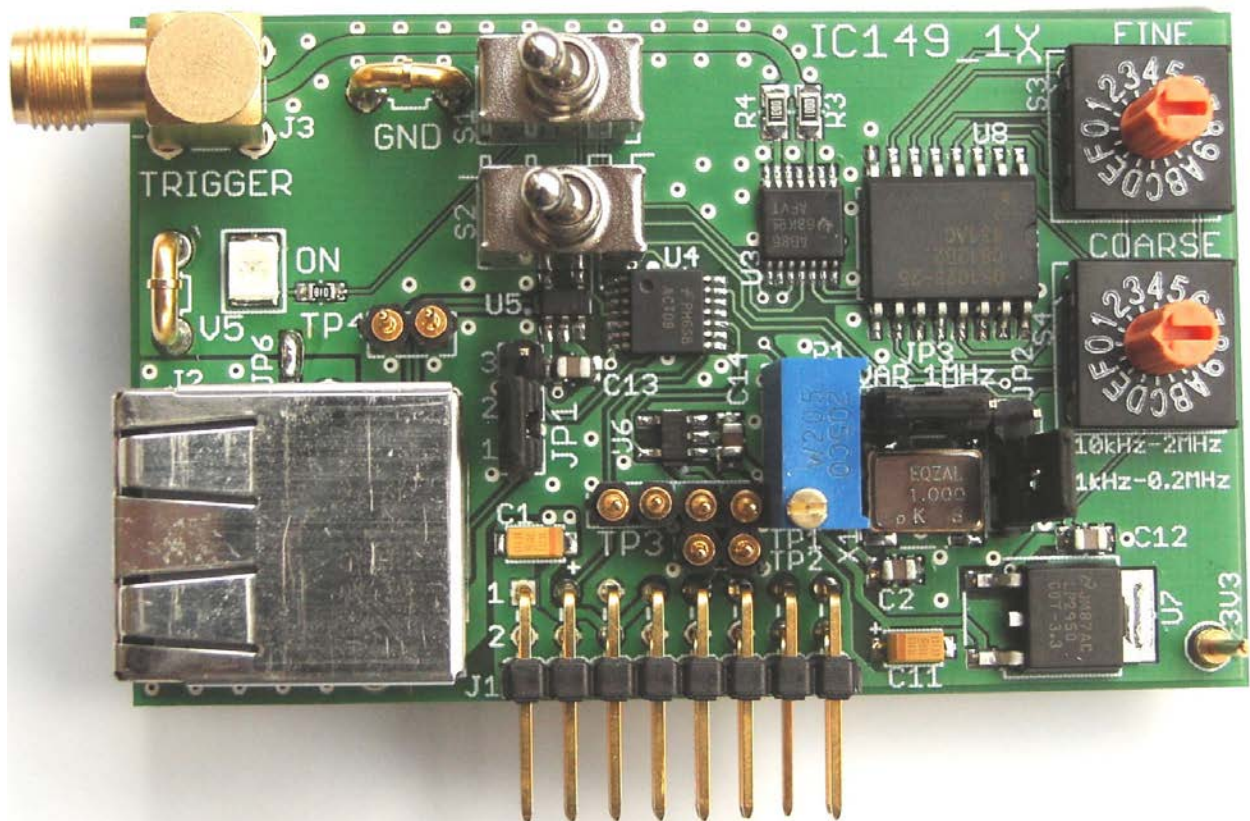
### FEATURES

Pulse width 1 to 64 ns in steps of 0.25 ns  
Fixed crystal stabilised frequency of 1 MHz  
Variable frequency of 1 kHz to 2 MHz  
LVDS und TTL outputs  
Compatible with HG1D, NZN1D, NZP1D

### APPLICATIONS

Pulse generator for fast laser diode drivers

### BOARD



# iC149

## PROGRAMMABLE ns-PULSE GENERATOR

preliminary



Rev A2, Page 2/8

### DESCRIPTION

Pulse generator iC149 produces pulses with a small duty cycle in the range of ca. 1 ns up to 64 ns max. in steps of 0.25 ns at a pulse frequency of 1 MHz. The pulse width is set by means of two hexadecimal coding switches in coarse and fine steps.

Alternatively a tunable (P1) oscillator can be used.

The pulses are output both as LVDS and TTL signals.

This module can easily be used with the evaluation boards HG1D, NZN1D and NZP1D.

### ELECTRICAL CHARACTERISTICS

Operating Conditions:  $T_a = 25\text{ }^\circ\text{C}$

Item No.	Symbol	Parameter	Conditions	Min.	Typ.	Max.	Unit
<b>Power Supply</b>							
101	V5	Power Supply		4.5	5	5.5	V
102	I(V5)	Supply Current	V5 = 5 V, S1 = ON/OFF, TRIGGER open V5 = 5 V, S1 = ON, TRIGGER 50 $\Omega$ vs. Ground		50 75		mA mA
<b>Pulse Width</b>							
201	T <sub>pmax</sub>	Maximum Pulsweite	V5 = 5 V, $T_a = 27\text{ }^\circ\text{C}$ , <i>coarse</i> = "F", <i>fine</i> = "F"		63.75		ns
202	T <sub>pmin</sub>	Minimum Pulsweite	V5 = 5 V, $T_a = 27\text{ }^\circ\text{C}$ , <i>coarse</i> = "0", <i>fine</i> $\leq$ "F" cf. Figure 6		1		ns

### PIN CONFIGURATION

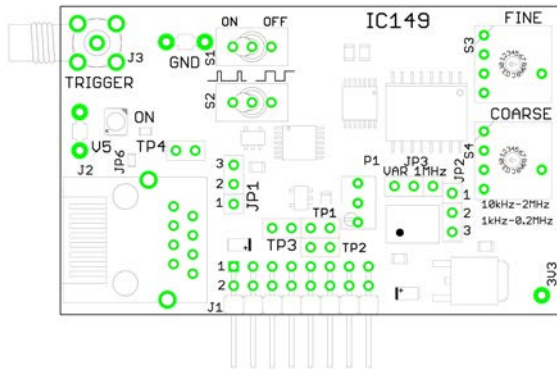


Figure 1: The populated PCB

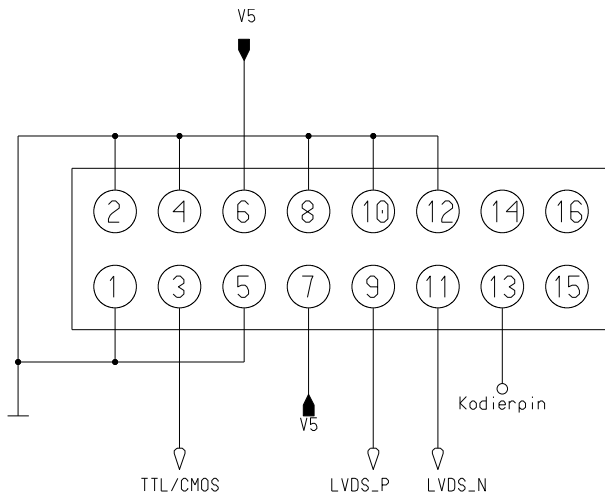


Figure 2: Pin configuration J1 (PCB bottom view)

- J1 16 pole pin header for power supply and signal outputs
- J2 RJ45 connector for output signals with LVDS or TTL/CMOS levels
- J3 TRIGGER: SMA connector for trigger output,  $R_{out} = 50 \Omega$
- JP1 Jumper at position 1-2 selects TTL/CMOS signals for J2
- JP2 Jumper at position 1-2: variable frequency from 10 kHz to 2 MHz  
Jumper at position 2-3: variable frequency from 1 to 100 kHz
- JP3 Jumper at position 1-2: crystal stabilised fixed frequency of 1 MHz  
Jumper at position 2-3: variable frequency from 1 kHz to 2 MHz (see JP2)
- S1 Oscillator ON/OFF
- S2 Selector switch: programmable pulse or symmetrical 1 MHz signal
- S3 Coding switch *fine*
- S4 Coding switch *coarse*
- TP1 LVDS signal at J1 (must be terminated with  $100 \Omega$  for measurement purpose)
- TP2 LVDS signal at J1
- TP3 TTL/CMOS signal at J1
- TP4 LVDS signal at J2
- P1 Trimmer for setting the variable frequency
- GND GND
- V5 5 V Power supply
- 3V3 3.3 V

Table 2: Connectors on the PCB

# iC149

## PROGRAMMABLE ns-PULSE GENERATOR

### BLOCK DIAGRAM

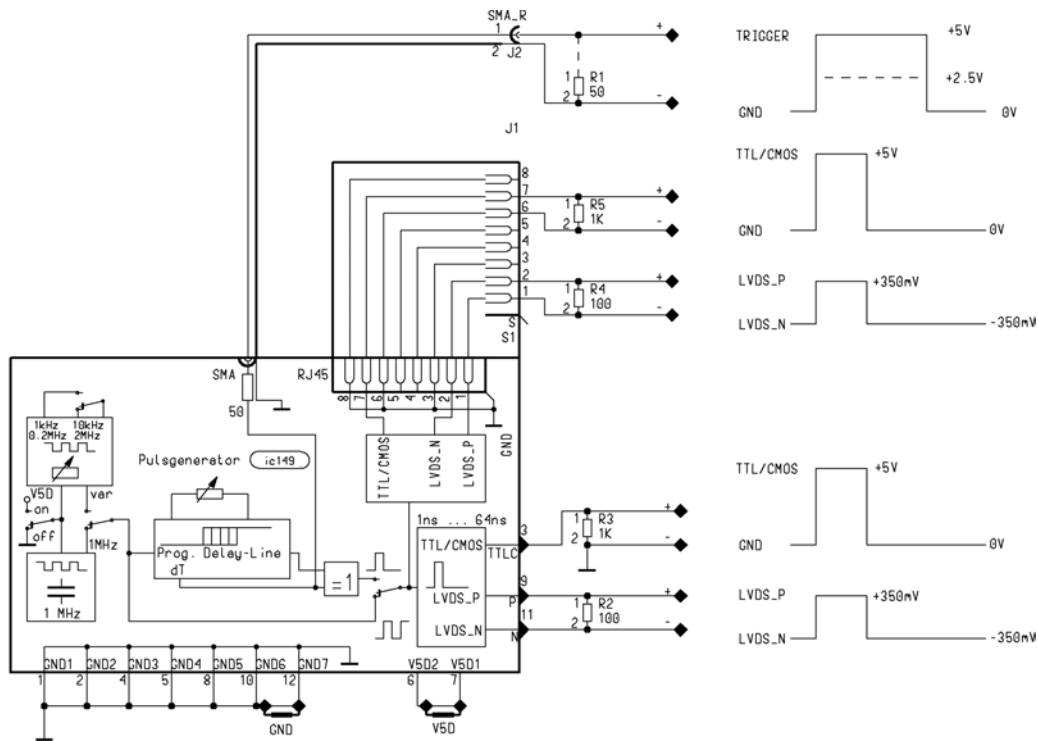


Figure 3: Block diagram of the iC149

### VARIABLE OSCILLATOR

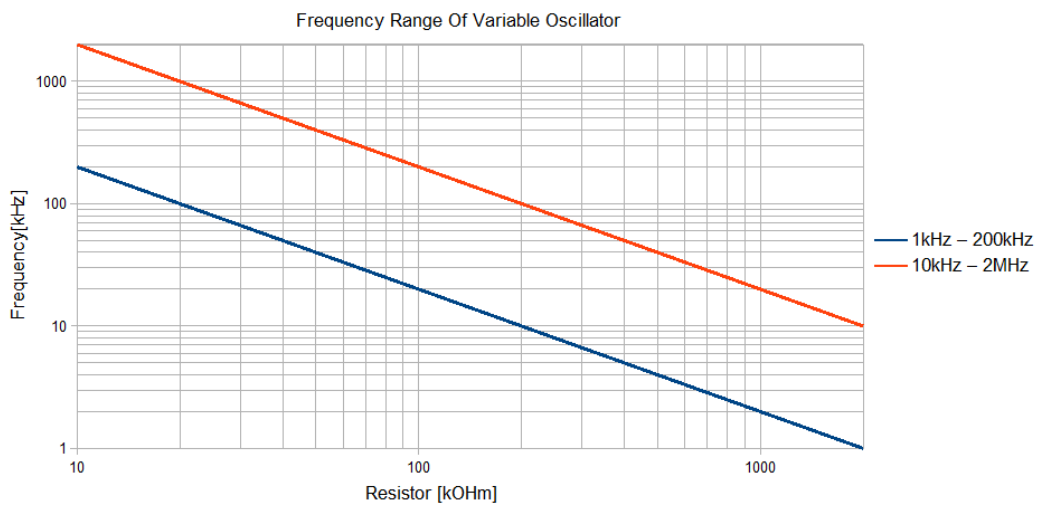


Figure 4: Variable frequency vs. potentiometer setting

SETTING THE PULSE WIDTH

$$\Delta T = (m * 4 \text{ ns} + n * 0.25 \text{ ns}) \pm 2 \text{ ns}$$

$1 \leq m \text{ (coarse)} \leq 15,$   
 $0 \leq n \text{ (fine)} \leq 15$

$$\Delta T = (m * 4 \text{ ns} + 3.75 \text{ ns}) \pm 2 \text{ ns}$$

$1 \leq m \text{ (coarse)} \leq 15,$   
 $n \text{ (fine)} = 15$

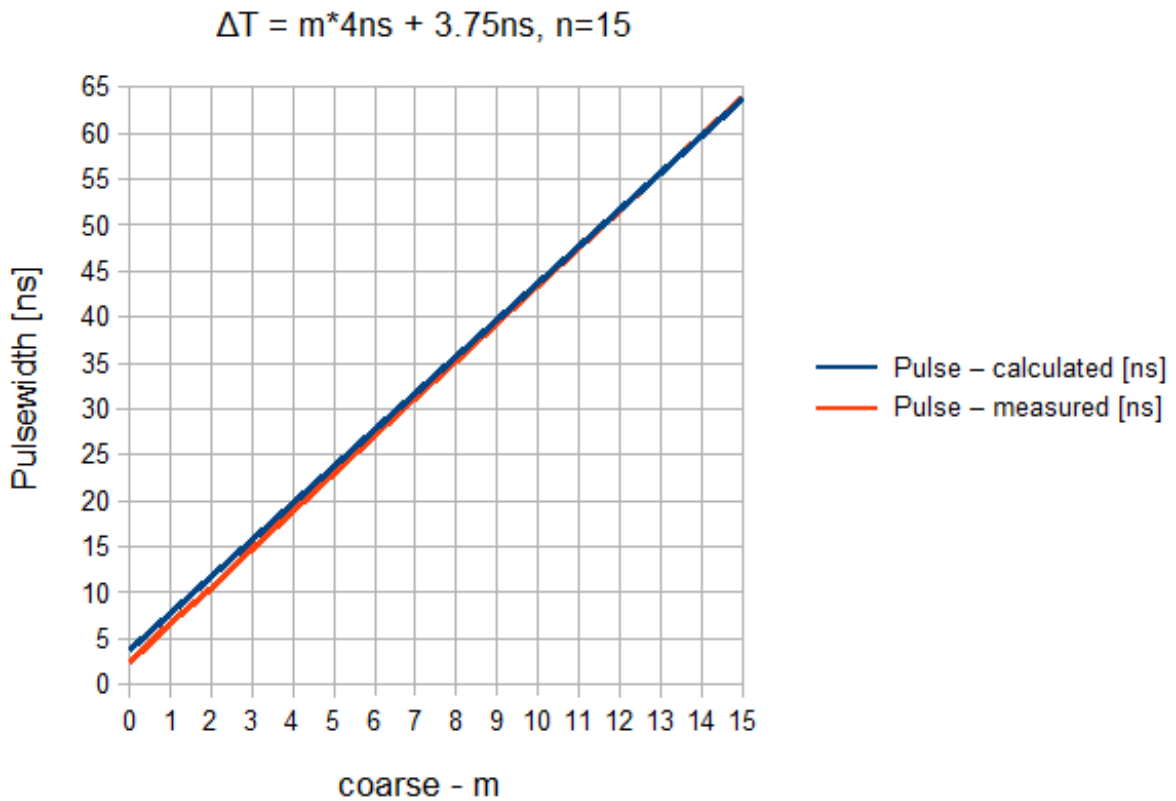


Figure 5: Setting the pulse width "coarse"

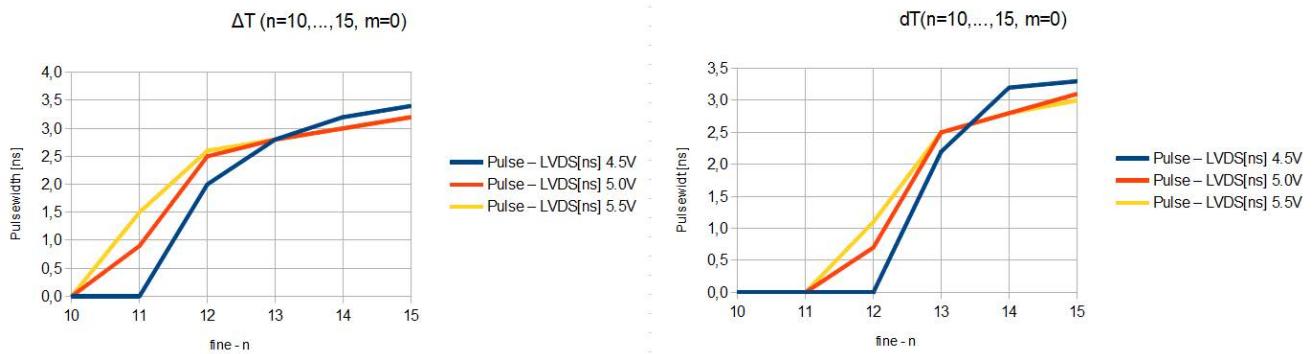


Figure 6: Setting the pulse width "fine", with respect to the supply voltage and device parameter variation

# iC149

## PROGRAMMABLE ns-PULSE GENERATOR

### SAMPLE PULSES

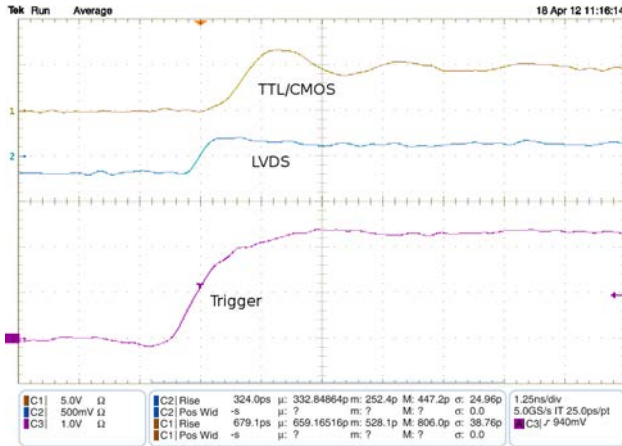


Figure 7: In pulse mode (S2 left hand position) the rising edge of the trigger signal and the LVDS appear simultaneously. The TTL/CMOS has an approx. 1 ns delay.

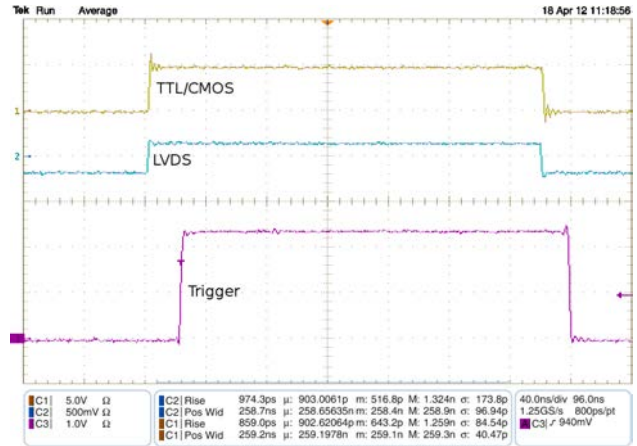


Figure 8: In the symmetrical mode (S2 right hand position) the rising edge of the trigger signal has an approx. 20 ns delay with reference to the output signals.

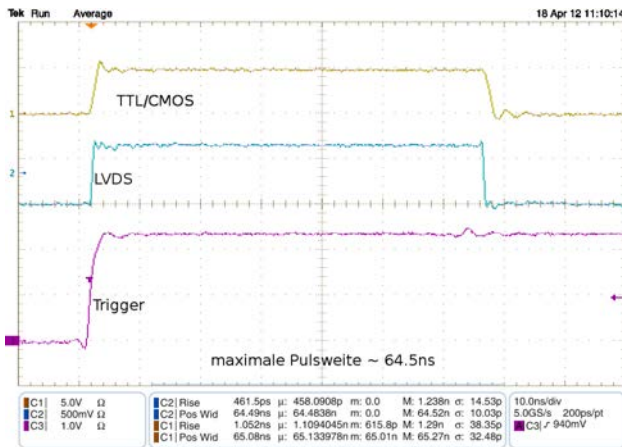


Figure 9: Maximum pulse width at switch setting "FF"

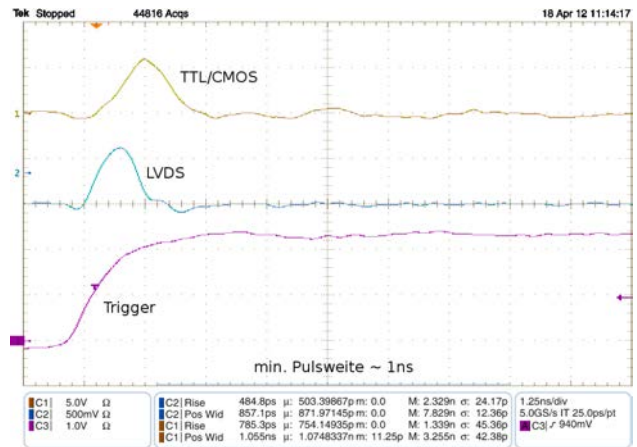


Figure 10: Minimum pulse width at switch setting "0B"



# iC149

## PROGRAMMABLE ns-PULSE GENERATOR

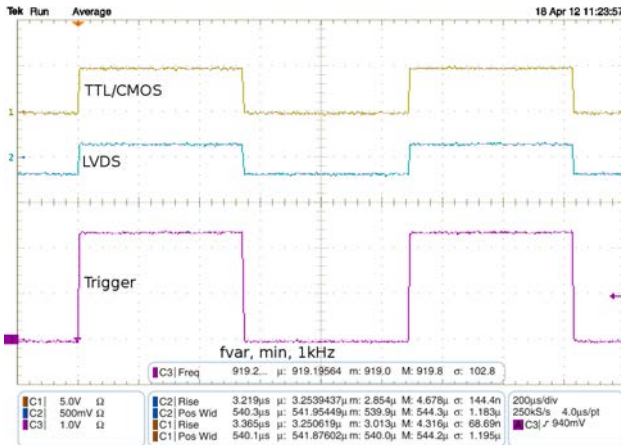


Figure 11: Minimum variable frequency, JP3 = 2-3, JP2 = 2-3, P1 = CCW

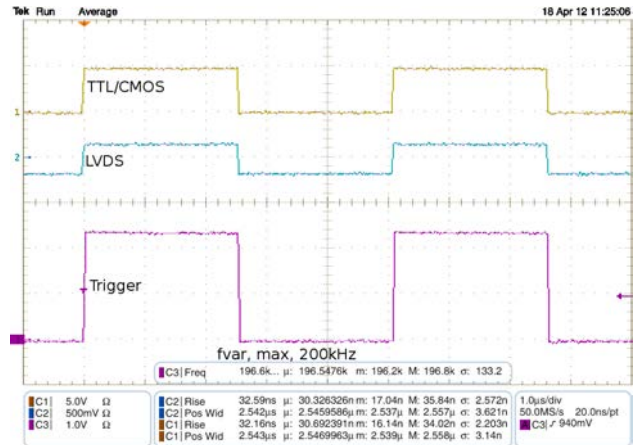


Figure 12: Maximum variable frequency, JP3 = 2-3, JP2 = 2-3, P1 = CW

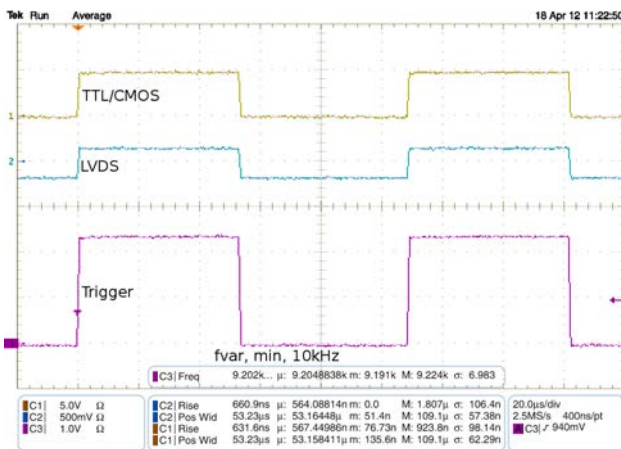


Figure 13: Minimum variable frequency, JP3 = 2-3, JP2 = 1-2, P1 = CCW

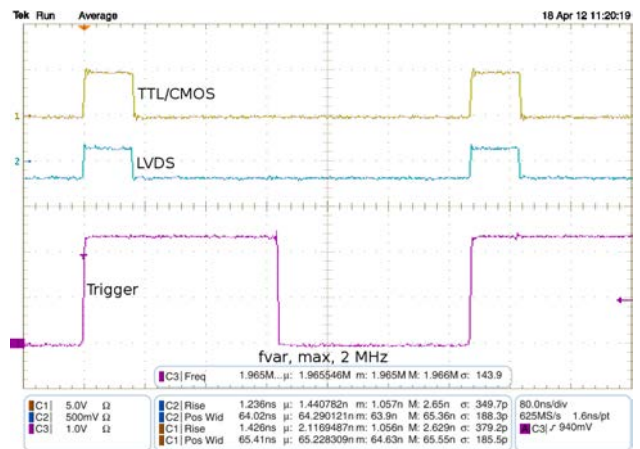


Figure 14: Maximum variable frequency, JP3 = 2-3, JP2 = 1-2, P1 = CW

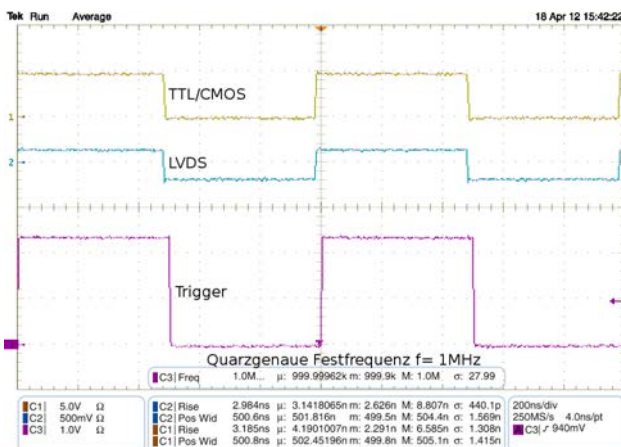


Figure 15: Fixed frequency 1 MHz, JP3 = 1-2

# iC149

## PROGRAMMABLE ns-PULSE GENERATOR

preliminary



Rev A2, Page 8/8

iC-Haus expressly reserves the right to change its products and/or specifications. An info letter gives details as to any amendments and additions made to the relevant current specifications on our internet website [www.ichaus.de/infoletter](http://www.ichaus.de/infoletter); this letter is generated automatically and shall be sent to registered users by email.

Copying – even as an excerpt – is only permitted with iC-Haus' approval in writing and precise reference to source.

iC-Haus does not warrant the accuracy, completeness or timeliness of the specification and does not assume liability for any errors or omissions in these materials.

The data specified is intended solely for the purpose of product description. No representations or warranties, either express or implied, of merchantability, fitness for a particular purpose or of any other nature are made hereunder with respect to information/specification or the products to which information refers and no guarantee with respect to compliance to the intended use is given. In particular, this also applies to the stated possible applications or areas of applications of the product.

iC-Haus conveys no patent, copyright, mask work right or other trade mark right to this product. iC-Haus assumes no liability for any patent and/or other trade mark rights of a third party resulting from processing or handling of the product and/or any other use of the product.