

# iC-OD OLGA OD4C

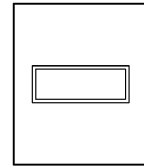
## PACKAGE SPECIFICATION



Rev D1, Page 1/4

### ORDERING INFORMATION

Type	Package	Options	Order Designation
iC-OD	OLGA OD4C	none	iC-OD OLGA OD4C

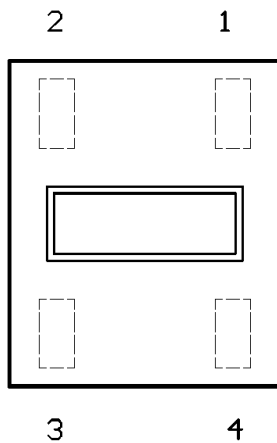


3.9 mm x 4.7 mm  
RoHS compliant

### PIN CONFIGURATION

### PIN FUNCTIONS

(top view)



No. Name Function

- 1 GND Ground
- 2 VCC +4.5 to +13.2 V Supply Voltage
- 3 IAC1 Current Output 1
- 4 IAC2 Current Output 2

### ABSOLUTE MAXIMUM RATINGS

Item No.	Symbol	Parameter	Conditions	Fig.	Min.	Typ.	Max.	Unit
TG1	Ta	Operating Ambient Temperature Range (extended temperature range on request)			-25		85	°C
TG2	Ts	Storage Temperature Range			-30		110	°C
TG3	Tpk	Reflow Soldering Peak Temperature	tpk < 20 s, convection reflow tpk < 20 s, vapour phase  TOL (time on label) 8 h; please refer to <a href="#">Customer Information #7</a> for details				245 230	°C °C

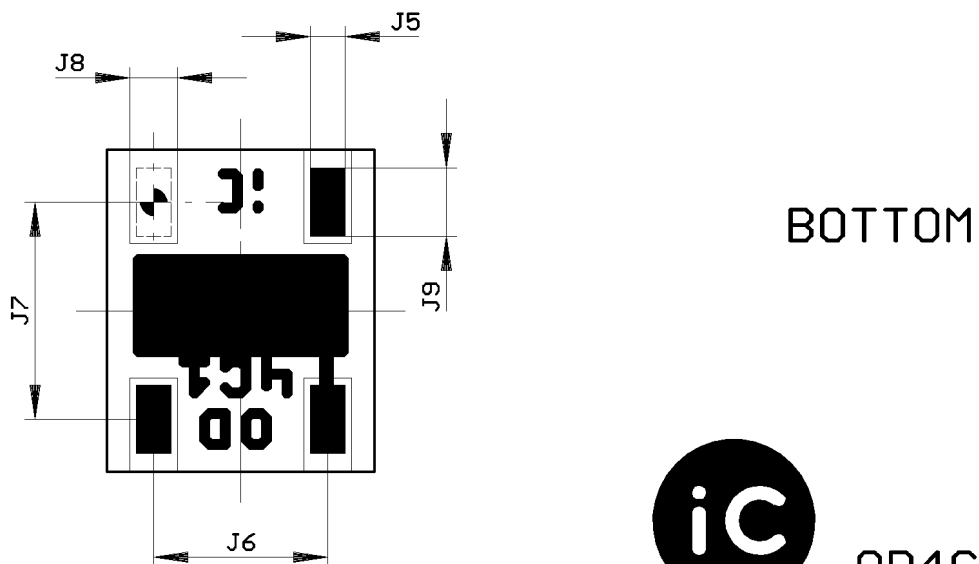
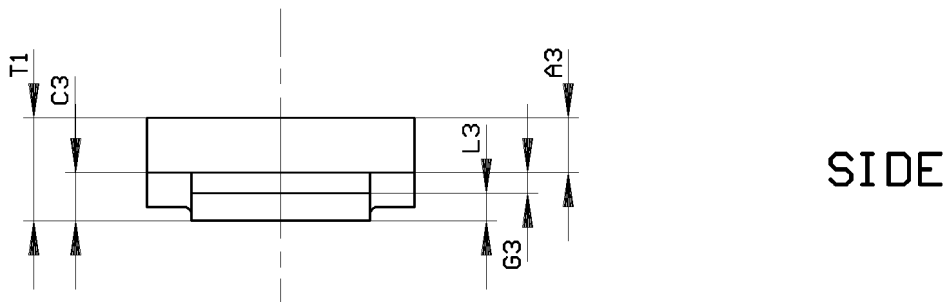
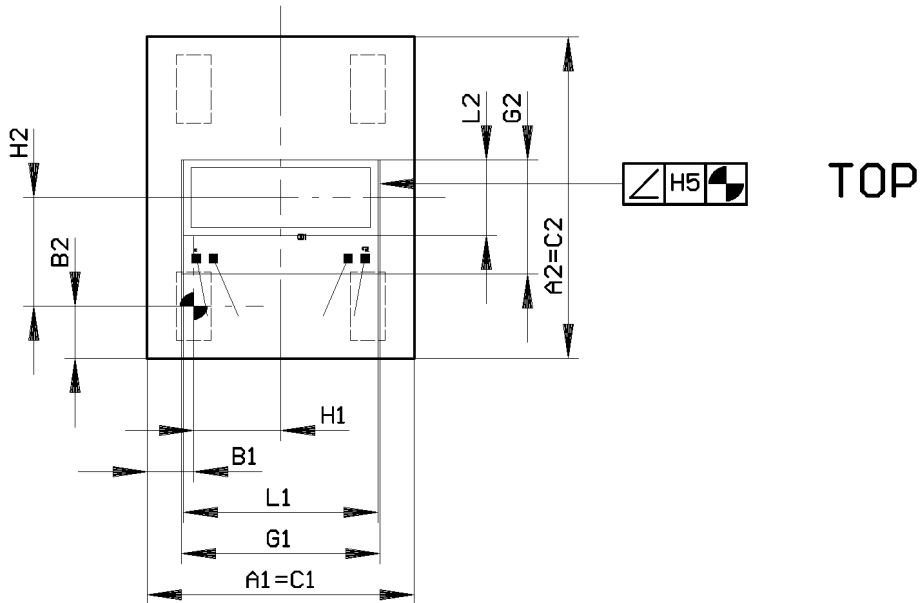
# iC-OD OLGA OD4C

## PACKAGE SPECIFICATION



Rev D1, Page 2/4

### PHYSICAL DIMENSIONS



OD4C\_DRC

# iC-OD OLGA OD4C

## PACKAGE SPECIFICATION



Rev D1, Page 3/4

### DIMENSION TABLE

Item	Parameter	Comments					Unit
			Min.	Typ.	Max.	Tolerance	
<b>Substrate</b>							
A1	Outline X			3.9		±0.1	mm
A2	Outline Y			4.7		±0.1	mm
A3	Substrate Thickness	bottom package to bottom die	0.783	0.87	0.957		mm
<b>Reference</b>							
B1	Outline vs. Reference X			0.68		±0.22	mm
B2	Outline vs. Reference Y			0.7625		±0.22	mm
<b>Frame Size and Shape (or Encapsulation)</b>							
C1	Frame Outline X	equivalent to A1					
C2	Frame Outline Y	equivalent to A2					
C3	Frame Thickness		0.645	0.7	0.755		mm
<b>Chip Placement</b>							
G1	Chip Size X				2.9	-0.075	mm
G2	Chip Size Y				1.66	-0.075	mm
G3	Chip Thickness			0.3		±0.025	mm
H1	Chip Position vs. Reference X	center of sensor		1.27		±0.195	mm
H2	Chip Position vs. Reference Y	center of sensor		1.5875		±0.195	mm
H5	Chip Tilt Angle vs. Paddle					±1.6	DEG
<b>Bottom Metal Pattern</b>							
J5	Lead Size X			0.5		±0.03	mm
J6	Lead Pitch X (or Lead-Lead Distance X)			2.54			mm
J7	Lead Pitch Y (or Lead-Lead Distance Y)			3.175			mm
J8	Solder Stop Off			0.7		±0.1	mm
J9	Lead Size Y			1.0		±0.03	mm
<b>Encapsulant (Glass Cover)</b>							
L1	Glass Size X			2.85		±0.05	mm
L2	Glass Size Y			1.1		±0.05	mm
L3	Glass Thickness			0.4		±0.03	mm
<b>Thickness Specifications</b>							
T1	Overall Thickness		1.428		1.712		mm

# iC-OD OLGA OD4C

## PACKAGE SPECIFICATION



Rev D1, Page 4/4

### REVISION HISTORY

Rev	Notes	Pages affected
A0	Initial version	all
B0	New package model name, all tolerance specifications revised	all
C1	HDI Technology, RoHS compliance	all
D1	Convection reflow soldering peak temperature reduced to 245 °C	1, 4

### GENERAL HANDLING INSTRUCTIONS

After opening the dry pack, devices must be mounted within 8 hours (in factory conditions of maximum 30 °C/60% RH) or must be stored at < 10% RH. Devices require baking before mounting if the Humidity

Indicator Card shows > 10% when read at 23 °C ±5 °C or if the conditions mentioned above are not met. Devices may be baked for 72 hours at 100 °C using high-temperature device containers (trays).

iC-Haus expressly reserves the right to change its products and/or specifications. An Infoletter gives details as to any amendments and additions made to the relevant current specifications on our internet website [www.ichaus.de/infoletter](http://www.ichaus.de/infoletter); this letter is generated automatically and shall be sent to registered users by email.

Copying – even as an excerpt – is only permitted with iC-Haus approval in writing and precise reference to source.

iC-Haus does not warrant the accuracy, completeness or timeliness of the specification on this site and does not assume liability for any errors or omissions in the materials. The data specified is intended solely for the purpose of product description. No representations or warranties, either express or implied, of merchantability, fitness for a particular purpose or of any other nature are made hereunder with respect to information/specification or the products to which information refers and no guarantee with respect to compliance to the intended use is given. In particular, this also applies to the stated possible applications or areas of applications of the product.

iC-Haus conveys no patent, copyright, mask work right or other trade mark right to this product. iC-Haus assumes no liability for any patent and/or other trade mark rights of a third party resulting from processing or handling of the product and/or any other use of the product.

As a general rule our developments, IPs, principle circuitry and range of Integrated Circuits are suitable and specifically designed for appropriate use in technical applications, such as in devices, systems and any kind of technical equipment, in so far as they do not infringe existing patent rights. In principle the range of use is limitless in a technical sense and refers to the products listed in the inventory of goods compiled for the 2008 and following export trade statistics issued annually by the Bureau of Statistics in Wiesbaden, for example, or to any product in the product catalogue published for the 2007 and following exhibitions in Hanover (Hannover-Messe).

We understand suitable application of our published designs to be state-of-the-art technology which can no longer be classed as inventive under the stipulations of patent law. Our explicit application notes are to be treated only as mere examples of the many possible and extremely advantageous uses our products can be put to.