

iC-MD EVAL MD1D

EVALUATION BOARD DESCRIPTION

ORDERING INFORMATION

Type	Order Designation	Description Options
Evaluation Board	iC-MD EVAL MD1D	iC-MD Evaluation Board ready to operate, accessible through GUI via PC adapter
Software	iC-MD GUI	GUI software for Windows PC Device setup file generation, board configuration via adapter For download link check www.ichaus.com/MD
PC Adapter	iC-MB3 ICSY MB3U-I2C	PC-USB Adapter with I2C/SPI extension cable Download documentation at www.ichaus.com/tools

BOARD MD1D

(size 80 mm x 100 mm)

TERMINAL DESCRIPTION

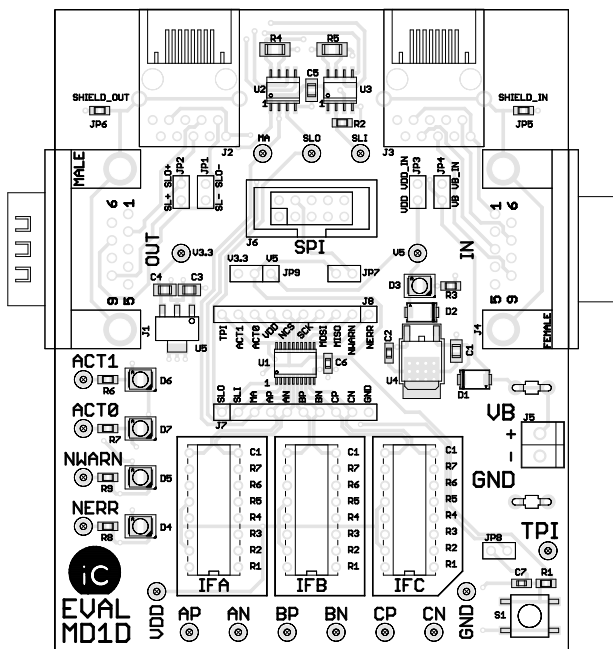


Figure 1: Component side

VB	+10 to +20 V Supply Voltage
V3.3	+3.3 V Supply Voltage
V5	+5 V Supply Voltage
VDD	Selected iC-MD Supply Voltage
GND	0 V Ground
AP	Incremental Input AP
AN	Incremental Input AN
BP	Incremental Input BP
BN	Incremental Input BN
CP	Incremental Input CP
CN	Incremental Input CN
TPI	Touch Probe Input
ACT1	Actuator 1 Output
ACT2	Actuator 2 Output
NERR	Error Input/Output (active low)
NWARN	Warning Input/Output (active low)
SPI	SPI Interface Connector
MA	Clock Input Interface <i>BiSS/SSI</i>
SLO	Data Output Interface <i>BiSS/SSI</i>
SLI	Data Input Interface <i>BiSS/SSI</i>
D3	Supply Indicator LED

iC-MD EVAL MD1D

EVALUATION BOARD DESCRIPTION



Rev A2, Page 2/9

RELATED DOCUMENTS

- IC Documentation
→ <http://www.ichaus.com/MD>
- PC-USB Adapter Description
→ http://www.ichaus.com/MB3U_MB3U-I2C_datasheet_en
- GUI software for Windows PC: check here for download links
→ <http://www.ichaus.com/MD>

CONNECTOR AND TERMINAL PINOUT

9-pin Sub D Connector J1 - male

PIN	Name	Function
1	VB	+12 V Supply Voltage
2	MAO+	Master Clock Output
3	MAO-	Master Clock Output (inverted)
4	VDD	+5 V Supply Voltage
5	SLO-	Data Output (inverted)
6	GND	0 V Ground
7	SL+	Slave Data
8	SL-	Slave Data (inverted)
9	SLO+	Data Output

9-pin Sub D Connector J4 - female

PIN	Name	Function
1	VB	+12 V Supply Voltage
2	MA+	Master Clock Input
3	MA-	Master Clock Input (inverted)
4	VDD	+5 V Supply Voltage
5	SLI-	Data Input Line (inverted)
6	GND	0 V Ground
7	SL+	Slave Data
8	SL-	Slave Data (inverted)
9	SLI+	Data Input Line

2-pin Terminal J5- Power Supply Input

PIN	Name	Function
1	VDD	+3.3 ... +5 V Supply Voltage
2	GND	0 V Ground

10-pin Adapter Connector J6 - male (to SPI Master)

PIN	Name	Function
1	SCL	Serial Clock Line
2	GND	0 V Ground
3	Reserved	-
4	+5V	+5 V Supply Voltage
5	Reserved	-
6	Reserved	-
7	MOSI	Serial Data Line
8	Reserved	-
9	MISO	Serial Data Line
10	GND	0 V Ground

Connector for USB Adapter MB3U-I2C

The board features one 10-pin connectors for serial SPI communication. The PC-USB Adapter iC-MB3 iC-SY MB3U-I2C enables the evaluation board to be connected to a common Windows PC via SPI interface. iC-MD software can be used to access the board from a Windows PC (see section "APPLICATION SOFTWARE" for more details).

Note : Please install the latest USB driver before you attach the PC Adapter to the PC.

iC-MD EVAL MD1D

EVALUATION BOARD DESCRIPTION

JUMPER DESCRIPTION

JP1, JP2: BiSS Onboard Loopback

2-pin jumper terminal male

PIN	Name	Function
-	BiSS Bus Structure	BiSS IN to BiSS OUT
X	BiSS Start of Bus, Point-To-Point	Loopback of SLO to SL

JP3: 5 V Power Supply

2-pin jumper terminal male

PIN	Name	Function
-	No Direct 5 V	
X	5 V Direct Supply	+5 V Direct Board Supply

JP4: VB Power Supply

2-pin jumper terminal male

PIN	Name	Function
-	No VB Supply	
X	VB Supply	Supply of +10 to +20 V Required to Board Terminals VB and GND

JP5, JP6: RJ45 Shield to GND

2-pin jumper terminal male

PIN	Name	Function
-	No RJ45 Shield to GND	
X	RJ45 Shield to GND	RJ45 BiSS Connector IN / OUT Shield to GND

JP7: 5 V Adapter Power Supply

2-pin jumper terminal male

PIN	Name	Function
-	No 5 V Adapter Supply	No direct +5 V Adapter Supply
X	5V Adapter Supply	+5V Direct

JP8: Enable TPI Button + Buffer

2-pin jumper terminal male

PIN	Name	Function
-	TPI Button + Buffer Disabled	External TPI Operation
X	TPI Button + Buffer Enabled	Manual TPI Operation Possible

JP9: 5 V Adapter Power Supply

3-pin jumper terminal male

PIN	Name	Function
12	5 V Voltage Regulator Selection	On Board +5 V Supply
23	3.3 V Voltage Regulator Selection	On Board 3.3 V Regulator Supply

iC-MD EVAL MD1D

EVALUATION BOARD DESCRIPTION

CIRCUIT DESCRIPTION

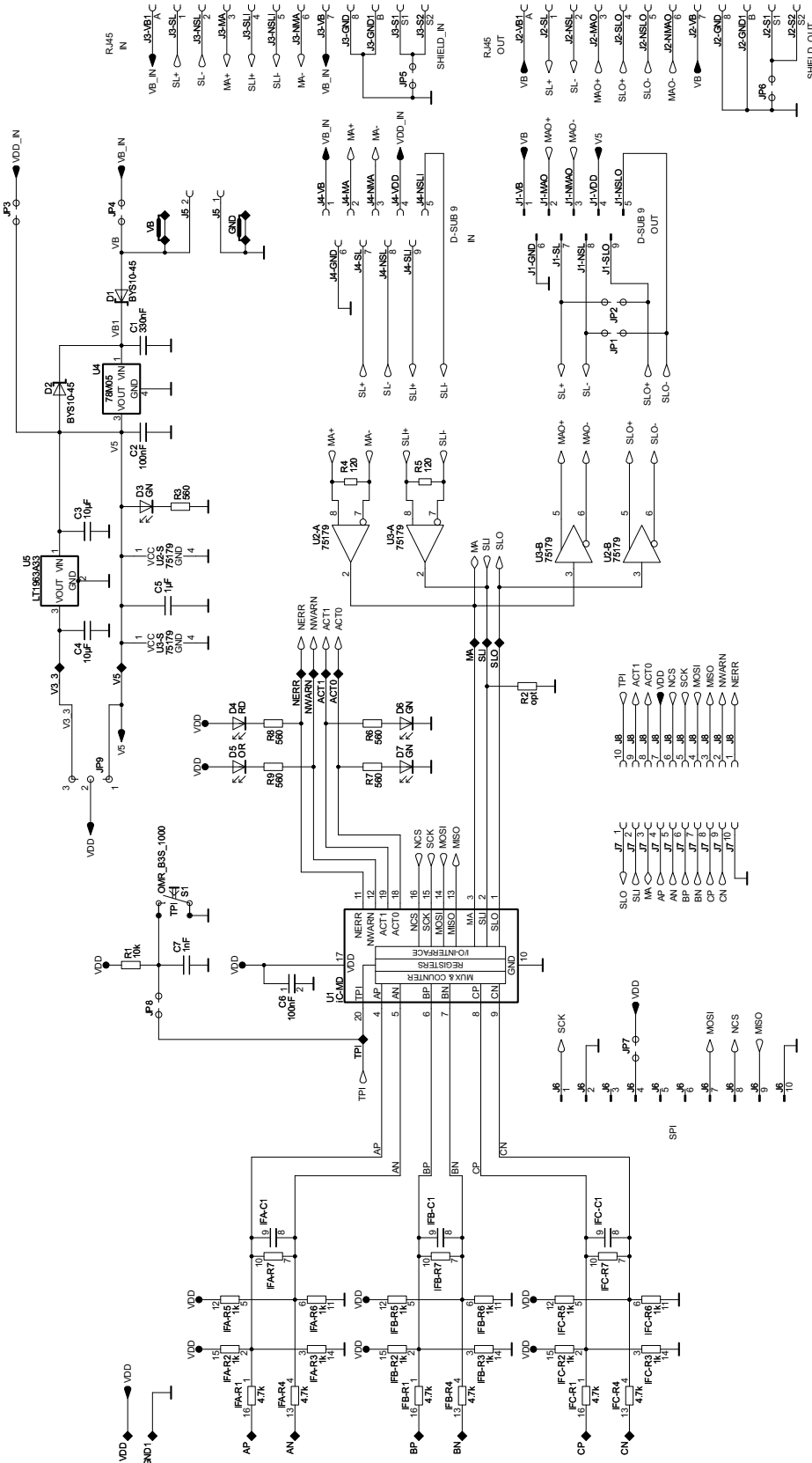


Figure 2: Circuit diagram including optional components

iC-MD EVAL MD1D

EVALUATION BOARD DESCRIPTION



Rev A2, Page 5/9

ASSEMBLY PART LIST

Device	Value (typical)	Comment
C1	330nF	Supply backup capacitor
C2, C6	100nF	Supply backup capacitor
C3, C4	10uF	Supply backup capacitor
C7, C5	1uF	Supply backup capacitor
J1	D-SUB9-M 90°	BiSS interface connector
J2, J3	RJ45_10 YAMAICHI_RJ45_10_Y- CONJACK-21	BiSS interface connector (not mounted)
J4	D-SUB9-F 90°	BiSS interface connector
J5	AKL59 02	Supply connector
J6	WSL10	SPI interface connector
U1	iC-MD TSSOP20	iC-MD or mounted DIL PCB with iC-MD
U2, U3	75LBC179 SO8	RS422 transceiver
U4	78M05 DPAK	5 V supply
U5	LT1963A33 SOT223-4	3.3 V supply
JP1, JP2, JP3, JP4	SLLP1097 2G	2-pin jumper terminal
JP5, JP6, JP7, JP8, JP9	SLLP1097 3G	2-pin/3-pin jumper terminal
GND, VB	LBS02	Supply connector
D1, D2	BYS10-45	Protective diodes
D3	LS-T670 green	LED 5 V
D4	LS-T670 red	LED NERR
D5	LO-T67K orange	LED NWARN
D6, D7	LS-T670 green	LED ACT1 + 2
R1, R2	10k	TPI resistor
R4, R5	120	RS422 terminator
R3, R6, R7, R8, R9	562	LED resistor
IFA, IFB, IFC	DIL16	Input filter system
ACT0, ACT1, AN, AP, BN, BP, CN, CP, GND1, MA, NERR, NWARN, SLI, SLO, TPI, V3_3, V5, VDD	S1-F	Pin
S1	OMR_B3S_1000 OMRON_B3S_1000	TPI button switch
J7, J8	MK0110G	Connection to DIL28 iC-MD adapter
RF1, RF2, RF3, RF4	Rubber foot	

iC-MD EVAL MD1D

EVALUATION BOARD DESCRIPTION



Rev A2, Page 6/9

EVALUATION SOFTWARE

iC-MD software for PCs running on Windows operating systems as well as the required USB driver are available as a ZIP file. iC-Haus software built with LabVIEW™ requires the installation of the LabVIEW™ Run-Time Engine (RTE). The RTE must be installed only once, hence there are two download links available.

Software overview online: <http://www.ichaus.com/software>

Download package	without RTE (small size)	including RTE (big size)
iC-MD:	http://www.ichaus.com/MD_gui	http://www.ichaus.com/MD_gui_rte

Features

- IC configuration made easy by parameter tables and tool tips
- Editing of application-specific default setups (*.hex)
- Access to DUT and transfer of setup data to RAM
- Storage of IC setups as Intel Hex file for programming devices

Installation

After unzipping the "MD1SO_gui_xxрте.zip", the following files are located in the selected directory.
(xx is a placeholder for the software revision, e.g. B1)

- "setup.exe"
- "USB_MB3U_driver_ftdiyryyy.exe"
(yyyy is a placeholder for the driver revision, e.g. 20600)

Note : Administrator rights are required to run installations.

1. The installation of the software starts by executing the "setup.exe" installation package in the folder "MD1SO_gui_xxрте".
→ Follow the on-screen instructions to finish the installation procedure.
2. USB driver need to be installed to access the evaluation board via the PC Adapter.
→ Execute the "USB_MB3U_driver_ftdiyryyy.exe" installation package and follow the on-screen instructions. This process can take a few minutes.
3. Installation will make the software "MD1SO_gui_xx.exe" available in the selected working directory. The execution of this file will start the software. Figure 3 shows a screenshot of the start up window.

GUI Description

The GUI is divided into four sections:

- 1: Menu section
- 2: Header section
- 3: Parameter tables and control buttons
- 4: Status section with transcript window and online help window.

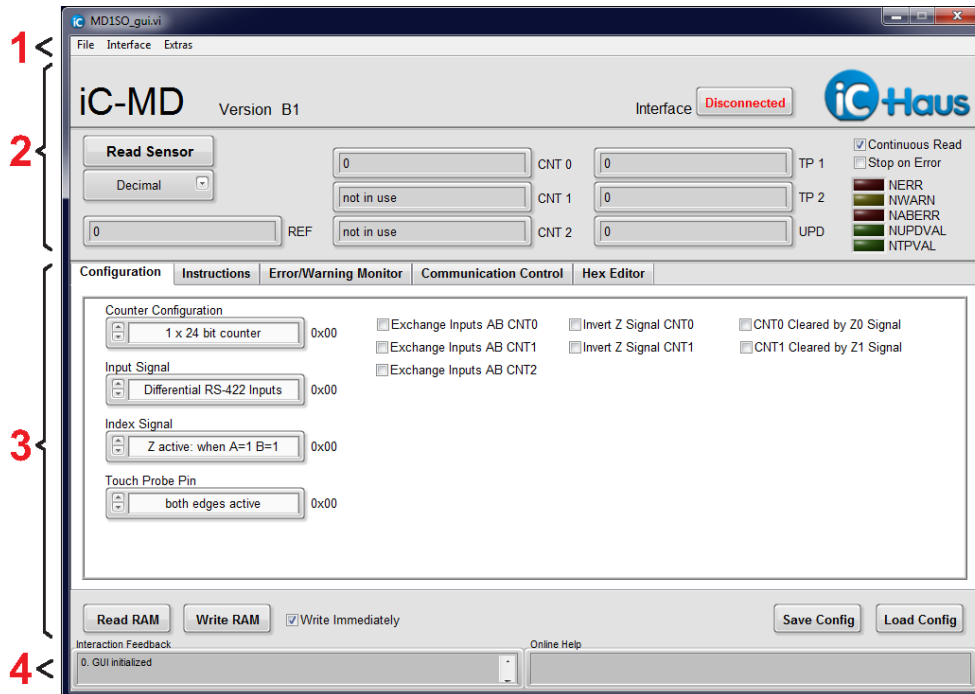


Figure 3: GUI start-up window

Menu	Button	Description
------	--------	-------------

1 Menu Section

<File>	Save Config File	Saves the configuration to a file, Intel Hex file format (*.hex).
	Load Config File	Loads the configuration to the IC, Intel Hex file format (*.hex).
	Exit	Quits the software.
<Interface>	No Hardware	Disconnects the board and resets the communication between PC and adapter.
	iC-Interface ↔ USB (MB3U SPI)	Selection for PC-USB adapter MB3U-I2C.
	Interface Options → Connect & Read	Checked: connects the PC adapter and reads the IC registers. Unchecked: connects the PC adapter without reading the IC registers.
<Extras>	Parameter Search	Enables a search field to locate a parameter's control field. If a name match is found, the corresponding control field will be highlighted and focused.
	Generate Report	Generates a *report.zip archive reporting the current software status. This report eases debugging software issues by the iC-Haus' support team.
	About	GUI release information.

2 Header Section

Project title, software version, status and connection state.

3 Parameter Section

Parameter configuration, read/write access to IC.

<Tabs>	Configuration	Refer to IC datasheet.
	Instructions	Refer to IC datasheet.
	Error/Warning Monitor	Refer to IC datasheet.
	Communication Control	Refer to IC datasheet.
	Hex Editor	This tab is a different view of the IC's register content in HEX format. Changes made are not automatically updated to the other tabs. Push <Read RAM> to update the parameter tabs.
<Parameter>	Read RAM	Reads all parameters from the IC and refreshes the display.
	Write RAM	Writes all parameters from GUI to IC RAM.
	Write Immediately	If checked, any change to a parameter is transferred immediately. If disabled, the GUI can be used stand-alone without hardware.
	Save Config	Reads all parameters from a file.
	Load Config	Writes all parameters to the a file.

4 Status Section

Transcript and feedback messages of user actions.

The GUI software starts with <Interface> *Disconnected*.

When moving the mouse cursor across an input box, a tooltip comes up and displays the real parameter name according to this box. If a functional parameter description is required, please refer to the IC datasheet.

iC-MD EVAL MD1D

EVALUATION BOARD DESCRIPTION



Rev A2, Page 9/9

REVISION HISTORY

Rel	Rel.Date	Chapter	Modification	Page
A1	10-01-28		First release.	
A2	14-10-22	ORDERING INFORMATION	Web links updated.	1
		RELATED DOCUMENTS	Web links updated.	2
		CONNECTOR AND TERMINAL PINOUT	MB3U-I2C connection and supply added.	2
		EVALUATION SOFTWARE	Standardized file names updated. Web links updated. GUI screenshots updated. GUI description updated.	6, 8

iC-Haus expressly reserves the right to change its products and/or specifications. An info letter gives details as to any amendments and additions made to the relevant current specifications on our internet website www.ichaus.de/infoletter; this letter is generated automatically and shall be sent to registered users by email.

Copying – even as an excerpt – is only permitted with iC-Haus' approval in writing and precise reference to source.

iC-Haus does not warrant the accuracy, completeness or timeliness of the specification and does not assume liability for any errors or omissions in these materials.

The data specified is intended solely for the purpose of product description. No representations or warranties, either express or implied, of merchantability, fitness for a particular purpose or of any other nature are made hereunder with respect to information/specification or the products to which information refers and no guarantee with respect to compliance to the intended use is given. In particular, this also applies to the stated possible applications or areas of applications of the product.

iC-Haus products are not designed for and must not be used in connection with any applications where the failure of such products would reasonably be expected to result in significant personal injury or death (*Safety-Critical Applications*) without iC-Haus' specific written consent. Safety-Critical Applications include, without limitation, life support devices and systems. iC-Haus products are not designed nor intended for use in military or aerospace applications or environments or in automotive applications unless specifically designated for such use by iC-Haus.

iC-Haus conveys no patent, copyright, mask work right or other trade mark right to this product. iC-Haus assumes no liability for any patent and/or other trade mark rights of a third party resulting from processing or handling of the product and/or any other use of the product.